

# Casio AQF-102W All-In-One Watch III

version III - 2017. 06. 07.

by Fazekas Márton <http://www.zseli.hu>

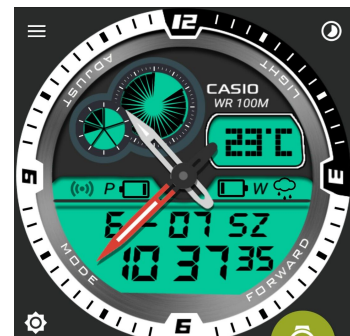


## Specifications:

- **Casio AQF-102W** “All-In-One” replica with 7 model’s skins (**1B and variant, 2B and variant, 4B, 7B, 9B**)
- Watchhands will *park* on 12 when entering any modes
- Any modes will automatically return to “Timekeeping” mode after 15 seconds, except *Stopwatch*, when running
- **Dim Mode** with dimmed full watch or with only Analog hands or Digital time
- Full face *Dim mode* has changeable Dim value
- **Night Mode** with constant Dim after sunset.
- Added battery, wifi and weather icons

## Using the watch:

Tap “**Light**” to “illuminate” the watch, lasts for 7 seconds



## WATCH MODES

*(In any MODE the “ADJUST” button becomes “BACK” to return timekeeping mode easily.)*

Tap “**Mode**” to circle through the classic+1 modes:

### In **Stopwatch Mode**

Tap **Start/Stop (Forward)** to run the stopwatch

Tap “**3**” for **Lap time** when watch is running

Tap “**3**” to **Reset** when stopwatch is stopped



### In **Timer / Alarm mode**

Tap the corresponding **Icon** to open the Timer or Alarm *Android Wear App*



*Notes: At the beginning I wanted to make these modes work like the original but I dropped that project. There's no point to recreate these functions, when there are more user friendly apps. So added tap actions instead to use the Android Wear Apps.*

### In **World Time Mode**

Tap **Change (Forward)** to circle through different World Times (set in Watchmaker App)



### In **Fitness Mode**

Step counter. Tap **Open app (Forward)** to open Fitness app.



Tap “**Temperature**” in *Timekeeping* mode to enter **Weather Mode**

### In **Weather Mode**

*Weather Mode* shows today’s and tomorrow’s weather and temperature

Tap **Open app (Forward)** to open *Android Wear Weather app*



## ADJUST MODES

(In any Adjust mode the “MODE” button becomes “BACK” to return timekeeping mode easily.)

Tap “**Adjust**” to enter **Model selection**, and tap again for **Dim mode**, **Dim Settings** and **Night Settings**

### In **Model Selection**

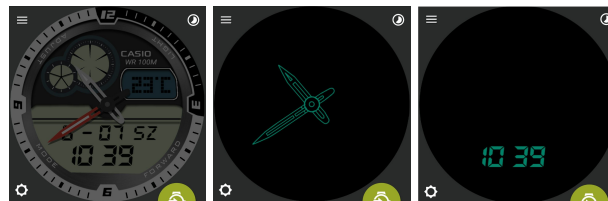
Tap **Change (Forward)** to circle through different models (7B by default).  
The models are: 7BVEF, 9BV, 1BVEF, 1BV, 2BV, 2BVEF, 4BVEF



### In **Dim Mode**

Tap **Change (Forward)** to switch Dim modes:

- **Full** - full watchface, with adjustable dim (see **Dim Settings**)
- **Ana** - only analog watch hands
- **Digi** - only digital time



### In **Dim Settings**

Tap < or > to decrease or increase the DIM value in *Dim* and *Night* modes



### In **Night Settings**

Tap **Change (Forward)** to turn ON and OFF *Night Mode*.

With *Night Mode* on a dim layer will activate at sunset until sunrise. This affect both bright and dimmed state. It's strenght can be set in **Dim Settings**.



---

Thanks to the members of the [Watchmaker Google+ community](#) for the help,  
namely *Reinhard Strauch* and *Ian Grody* for correcting my coding.

Also thanks for the Lap time code for *Wayne Thomason*,  
the Hand parking code for *Mark Shoulson* (found on Watchmaker Wiki)  
and *krystofetbob* for the Light code.

All graphics was done by me.